



# CBTis 122, English I

## Module 3

### What do you normally do?

***a) Comparative and Superlative adjectives.***





## COMPARATIVE FORM

**THE ORANGE IS BIGGER  
THAN AN APPLE**

YAO IS TALLER  
THAN THE WOMAN.



# Comparative form



RONALDO  
IS OLDER  
THAN  
MESSI.

COINS ARE SMALLER THAN BILLS.



A RABBIT IS  
FASTER  
THAN A  
TURTLE.



A FERRARI IS  
MORE  
EXPENSIVE THAN  
A LAMBORGHINI



WE USE THE COMPARATIVE OF  
ADJECTIVES WHEN WE COMPARE TWO  
PEOPLE, ANIMALS OR THINGS.

- **NOUN**: (N) *Things, People or Places.*
- **ADJECTIVE**: (A) *The adjective describes a noun.*

### **Examples:**

- **The house** is **small**.
- **My sister** is **pretty**.
- **China** is a **big** country.



- **COMPARATIVE FORM:**
  - 1) *adjectives with one syllable.*
  - 2) *adjectives with 2/3/4 syllables.*
  - 3) *adjectives that end in “- y”.*
  - 4) *irregular comparative form.*

# FORMATION

## 1) ADJECTIVE + (-ER) + THAN

- **SHORT ADJECTIVES (one syllable):**
- Old ----- Older
- Nice ----- Nicer
- Slow ----- Slower
- Late ----- Later
- Cheap ----- Cheaper
- Big ----- Bigger
- Hot ----- Hotter
- Thin ----- Thinner

## 2) MORE + ADJECTIVE + THAN

- **LONG ADJECTIVES (2/3/4 syllables):**
- Modern – more modern
- Polite – more polite
- Tired – more tired
- Expensive – more expensive
- Interesting – more interesting
- Famous – more famous
- Important – more important
- Exclusive – more exclusive

# FORMATION

## 3) ADJECTIVE (with end - "y") + (-ER) + THAN

- If an adjective ends in a consonant + “- **y**”, change the “-**y**” to “- **i**” and add “- **er**”.
- Pretty ----- prett**ier**
- Funny ----- funn**ier**
- Easy ----- eas**ier**
- Heavy ----- heav**ier**
- Early ----- earl**ier**

## 4) IRREGULAR COMPARATIVE FORMS + THAN

- The comparative forms of...
- Good ----- **better**
- Bad ----- **worse**
- Far ----- **farther/further**
- Little ----- **less**
- Much/Many ----- **more**

...are irregular.

Write the comparative form for the following adjectives (-ER Form), (MORE Form) or (Irregular Form)+ THAN...

ADJECTIVE	Comparative Form	ADJECTIVE	Comparative Form
1.- Old	<b>Older than</b>	9.- Sweet	
2.- Small		<b>10.- Expensive</b>	<b>More expensive than</b>
3.- Big		11.-Hot	
4.- Important		12.-Cheap	
5.- Easy		13.-Good	
6.- Difficult		14.-Bad	
7.-Long		15.-Far	
8.- Heavy		16.-Lazy	

Write the comparative form for the following adjectives (-ER / -IER Form), (MORE Form) or (Irregular Form)+ THAN...

ADJECTIVE	Comparative Form	ADJECTIVE	Comparative Form
1.- Old	<b>Older than</b>	9.- Sweet	Sweeter than
2.- Small	Smaller than	<b>10.- Expensive</b>	<b>More expensive than</b>
3.- Big	Bigger than	11.-Hot	Hotter than
4.- Important	More important than	12.-Cheap	Cheaper than
5.- Easy	Easier than	13.-Good	Better than
6.- Difficult	More difficult than	14.-Bad	Worse than
7.-Long	Longer than	15.-Far	Father/further than
8.- Heavy	Heavier than	16.-Lazy	Lazier than



## REMEMBER:

Adjective + (-er form) + THAN

More + *adjective form* + THANAdjective (ending - y) + (-ier form) +  
THAN*(Irregular form)* + THAN

Complete the sentences. Use the  
COMPARATIVE form of the words  
in *italics*.

- 1. (*comfortable*). The blue chair is *more comfortable than* the yellow chair.
- 2. (*dark*). Tom's mustache is \_\_\_\_\_ Don's.
- 3. (*heavy*). Iron is \_\_\_\_\_ wood.
- 4. (*difficult*). My Math course is \_\_\_\_\_ my English course.
- 5. (*short*). My little finger is \_\_\_\_\_ my middle finger.
- 6. (*pretty*). This girl is \_\_\_\_\_ the other girl.
- 7. (*strong*). A horse is \_\_\_\_\_ a person.
- 8. (*beautiful*). A rose is \_\_\_\_\_ a weed.
- 9. (*lazy*). I'm \_\_\_\_\_ my brother.
- 10. (*long*). The Nile river is \_\_\_\_\_ the Mississippi.
- 11. (*intelligent*). A dog is \_\_\_\_\_ a chicken.

REMEMBER:

Adjective + (-er form) + THAN

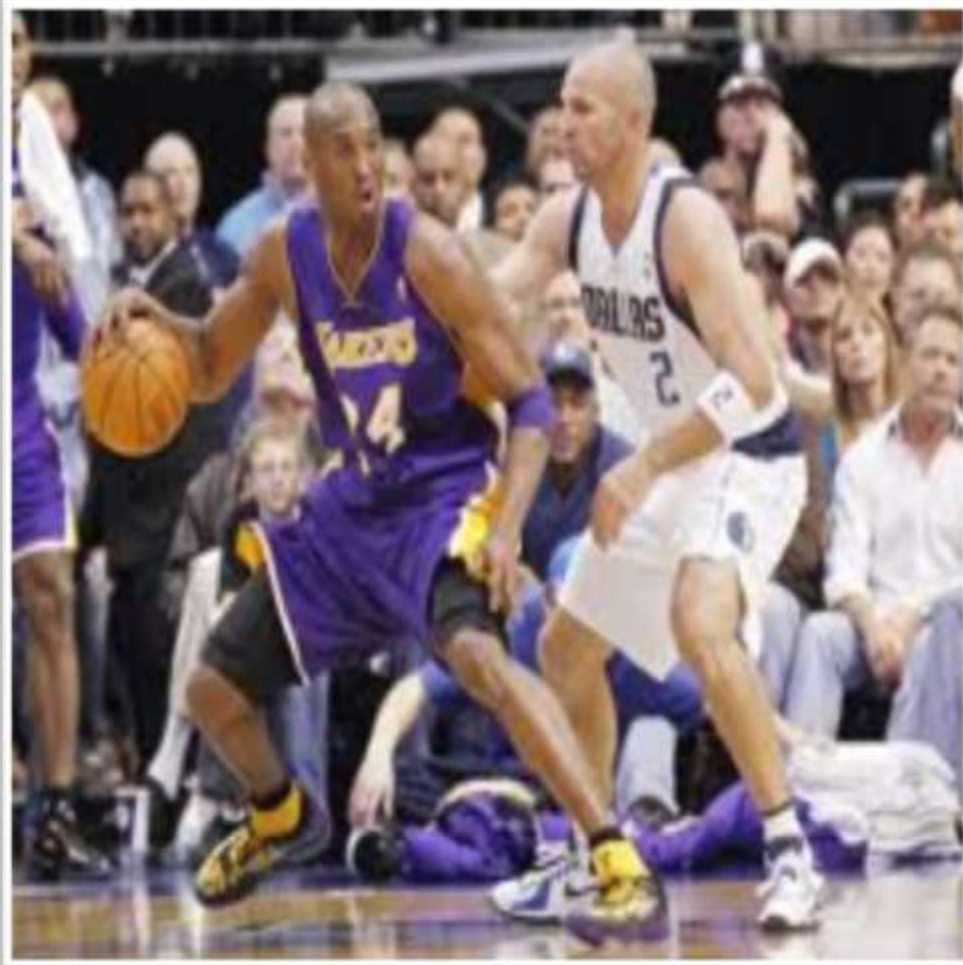
More + adjective form + THAN

Adjective (ending - y) + (-ier form) +  
THAN

(Irregular form) + THAN

Complete the sentences. Use the  
COMPARATIVE form of the words  
in *italics*.

- 1. (*comfortable*). The blue chair is *more comfortable than* the yellow chair.
- 2. (*dark*). Tom's mustache is *darker than* Don's.
- 3. (*heavy*). Iron is *heavier than* wood.
- 4. (*difficult*). My Math course is *more difficult than* my English course.
- 5. (*short*). My little finger is *shorter than* my middle finger.
- 6. (*pretty*). This girl is *prettier than* the other girl.
- 7. (*strong*). A horse is *stronger than* a person.
- 8. (*beautiful*). A rose is *more beautiful than* a weed.
- 9. (*lazy*). I'm *lazier than* my brother.
- 10. (*long*). The Nile river is *longer than* the Mississippi.
- 11. (*intelligent*). A dog is *more intelligent than* a chicken.

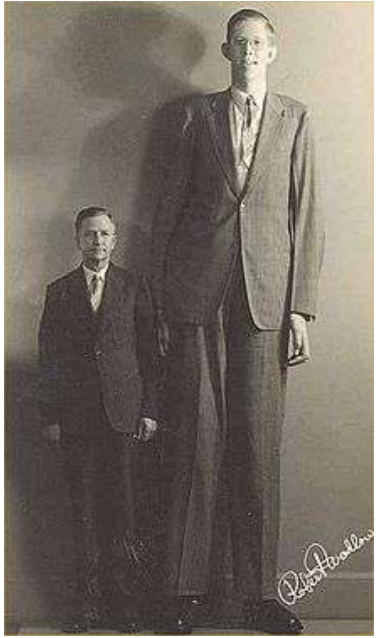


SUPERLATIVE FORM

youngest mvp in nba history

**KOBE IS THE MOST VALUABLE PLAYER OF THE YEAR.**

ROBERT P. WADLOW THE  
TALLEST MAN IN THE  
 WORLD (2.72mts)



WHITE HOUSE IS THE  
OLDEST BUILDING IN TOWN.



TODAY IS THE  
COLDEST DAY OF THE  
 YEAR.



THIS IS THE FASTEST CAR IN  
 THE WORLD.



SHARK IS THE MOST  
DANGEROUS ANIMAL ON  
 THE SEA.



**WE USE THE SUPERLATIVE OF ADJECTIVES  
 WHEN WE COMPARE ONE PERSON,  
ANIMAL OR THING. WITH SEVERAL OF  
 THE SAME KIND.**



- **NOUN**: (N) *Things, People or Places.*
- **ADJECTIVE**: (A) *The adjective describes a noun.*



### **Examples:**

- **The house** is **small**.
- **My sister** is **pretty**.
- **China** is a **big** country.



- **SUPERLATIVE FORM:**
  - 1) *adjectives with one syllable... + noun.*
  - 2) *adjectives with 2/3/4/5 syllables ... + noun.*
  - 3) *adjectives that end in “- y” ... + noun.*
  - 4) *irregular superlative form ... + noun.*

# FORMATION

1) **THE** + ADJECTIVE + (-**EST**) + NOUN+  
OF/IN/ON

- **SHORT ADJECTIVES (one syllable):**
- Old ----- The **Oldest**
- Nice ----- The **Nicest**
- Slow ----- The **Slowest**
- Late ----- The **Latest**
- Cheap --- The **Cheapest**
- Big ----- The **Biggest**
- Hot ----- The **Hottest**
- Thin ----- The **Thinnest**

2) **THE** + **MOST** + ADJECTIVE + NOUN+  
OF/IN/ON

- **LONG ADJECTIVES (2/3/4/5 syllables):**
- Modern – The **most** modern
- Polite – The **most** polite
- Tired – The **most** tired
- Expensive – The **most** expensive
- Interesting – The **most** interesting
- Famous – The **most** famous
- Important – The **most** important
- Exclusive – The **most** exclusive

# FORMATION

## 3) THE + ADJECTIVE (with end - "y") + (-IEST) + NOUN + OF/IN/ON

- If an adjective ends in a consonant + “- **y**”, change the “- **y**” to “- **i**” and add “- **est**”.
- Pretty ----- The **prettiest**
- Funny ----- The **funniest**
- Easy ----- The **easiest**
- Heavy ----- The **heaviest**
- Early ----- The **earliest**

## 4) THE + IRREGULAR SUPERLATIVE FORM + NOUN + OF/IN/ON

- The superlative forms of...
  - Good ----- The best
  - Bad ----- The worst
  - Far --- The farthest/furthest
  - Little ----- The least
  - Much/Many ----- The most
- ...are irregular.

Write the Superlative form for the following adjectives  
(*-EST Form*), (*The MOST Form*) or (*THE Irregular Form*)+ **NOUN +OF/IN/ON...**

ADJECTIVE	Superlative Form	ADJECTIVE	Superlative Form
1.- Old	The oldest	9.- Sweet	
2.- Small		10.- Expensive	The most expensive
3.- Big		11.-Hot	
4.- Comfortable		12.-Cheap	
5.- Easy		13.-Good	
6.- Difficult		14.-Bad	
7.-Long		15.-Far	
8.- Heavy		16.-Lazy	



Write the Superlative form for the following adjectives

(*-EST / -IEST Form*), (*The MOST Form*) or (*THE Irregular Form*)+ **NOUN + OF/IN/ON...**

ADJECTIVE	Superlative Form	ADJECTIVE	Superlative Form
1.- Old	The oldest	9.- Sweet	The sweetest
2.- Small	The smallest	10.- Expensive	The most expensive
3.- Big	The biggest	11.-Hot	The hottest
4.- Comfortable	The most comfortable	12.-Cheap	The cheapest
5.- Easy	The easiest	13.-Good	The best
6.- Difficult	The most difficult	14.-Bad	The worst
7.-Long	The longest	15.-Far	The farthest/furthest
8.- Heavy	The heaviest	16.-Lazy	The laziest

Complete the sentences. Use the SUPERLATIVE form of the words in *italics*.

REMEMBER:

THE + Adjective + (-est form) + noun + OF/IN/ON

THE + MOST + adjective form + noun + OF/IN/ON

THE + Adjective(ending -y) + (-iest form) + noun + OF/IN/ON

THE + (Irregular form) + noun + OF/IN/ON

- 1. (*large*). Toronto is the largest city in Canada.
- 2. (*long*). The Nile is \_\_\_\_\_ river in the world.
- 3. (*interesting*). I'm taking four classes. My History class is \_\_\_\_\_ of all.
- 4. (*high*). Mt. McKinley in Alaska is \_\_\_\_\_ mountain in North America.
- 5. (*tall*). The Sears Tower is \_\_\_\_\_ building in Chicago.
- 6. (*short*). February is \_\_\_\_\_ month of the year.
- 7. (*fast*). \_\_\_\_\_ way to travel is by airplane.
- 8. (*beautiful*). In my opinion, Miami is \_\_\_\_\_ city in U.S.A.
- 9. (*small*). Tlaxcala is \_\_\_\_\_ state in Mexican Republic.
- 10. (*big*). Lake Superior is \_\_\_\_\_ lake in North America.
- 11. (*near*). Excuse me, where is \_\_\_\_\_ bank?

Complete the sentences.  
Use the SUPERLATIVE form  
of the words in *italics*.

REMEMBER:

THE + Adjective + (-est form) + noun + OF/IN/ON

THE + MOST + adjective form + noun + OF/IN/ON

THE + Adjective(ending -y) + (-iest form) + noun + OF/IN/ON

THE + (Irregular form) + noun + OF/IN/ON

- 1. (*large*). Toronto is the largest city in Canada.
- 2. (*long*). The Nile is the longest river in the world.
- 3. (*interesting*). I'm taking four classes. My History class is the most interesting of all.
- 4. (*high*). Mt. McKinley in Alaska is the highest mountain in North America.
- 5. (*tall*). The Sears Tower is the tallest building in Chicago.
- 6. (*short*). February is the shortest month of the year.
- 7. (*fast*). The fastest way to travel is by airplane.
- 8. (*beautiful*). In my opinion, Miami is the most beautiful city in U.S.A.
- 9. (*small*). Tlaxcala is the smallest state in Mexican Republic.
- 10. (*big*). Lake Superior is the biggest lake in North America.
- 11. (*near*). Excuse me, where is the nearest bank?

# F O R M A T I O N

HOW LONG IS THE ADJECTIVE?	ADJECTIVE ending	COMPARATIVE		ADJECTIVE ending	SUPERLATIVE	
<b>SHORT ADJECTIVES</b> (one syllable):	"...E"="R"	<b>ADJECTIVE + (ER) +</b>	<b>THAN</b>	"...E"="ST"	<b>THE + ADJECTIVE + (EST) + NOUN</b>	<b>OF/IN/ON (all)</b>
	"VOWEL+CTE"="2CTE+ER"			"VOWEL+CTE"="2CTE+EST"		
	"VOWEL+VOWEL+CTE"="ER"			"VOWEL+VOWEL+CTE"="EST"		
	"CTE+CTE"="ER"			"CTE+CTE"="EST"		
<b>LONG ADJECTIVES</b> (2/3/4/5 syllables):	(2/3/4/5 syllables)	<b>MORE + ADJECTIVE +</b>	<b>THAN</b>	(2/3/4/5 syllables)	<b>THE + MOST + ADJECTIVE + NOUN</b>	<b>OF/IN/ON (all)</b>
<b>ADJECTIVE</b> (with end – "y")	"CTE" + "Y" = "IER"	<b>ADJECTIVE + (IER) +</b>	<b>THAN</b>	"CTE" + "Y" = "IEST"	<b>THE + ADJECTIVE + (IEST) + NOUN</b>	<b>OF/IN/ON (all)</b>
<b>IRREGULAR COMPARATIVE FORMS</b>	Change the form completely	Good ----- <b>better</b> Bad ----- <b>worse</b> Far ----- <b>farther/further</b> Little ----- <b>less</b> Many/Much ----- <b>more</b>	<b>THAN</b>	Change the form completely	Good --- <b>THE BEST+NOUN</b> Bad --- <b>THE WORST+NOUN</b> Far ---- <b>THE FARTHEST-THE FURTHEST+NOUN</b> Little --- <b>THE LEAST+NOUN</b> Many/Much --- <b>THE MOST+NOUN</b>	<b>OF/IN/ON (all)</b>